



Bissell Centre WINTER WISHLIST

We invite you to share the warmth in your life with those in need this holiday season by filling a stocking for families in need.

Must be new, unwrapped gifts.

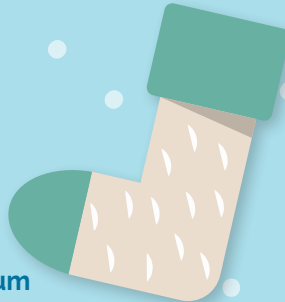
Please include a minimum of 8 listed items per stocking.

Please add a tag on each stocking to indicate men's or women's.



Women's Stockings

- Small Sweets/ Chocolates/ Gum
- Razor/ Shaving Cream
- Shampoo/ Shower Gel/ Lotions
- Cosmetics (Mascara, Lip Balm, Eye Shadow)
- Small Perfume/ Body Spray
- Hand Warmers
- Thermal/ Wool Socks
- Travel Mug with Hot Chocolate Pack
- 2 Bus Tickets
- \$5 Coffee Gift Card



Men's Stockings

- Small Sweets/ Chocolates/ Gum
- Razor/ Shaving Cream
- Body Wash
- New Underwear
- Work Gloves
- Hand Warmers
- Thermal/ Wool Socks
- Deck of Cards
- Travel Mug with Hot Chocolate Pack
- 2 Bus Tickets
- \$5 Coffee Gift Card

Children's Gifts



- **Infant (0-2):** Clothes, Rattles, Plush Toys, Musical Toys
- **Children (3-11):** Coloring Books, Puzzles, Lego, Cars & Trucks, Barbies, Dolls, Sesame Street Toys, Children's Toothbrushes, Toothpaste, Bubble Bath

- **Teens:** Remote Control Vehicles, Craft or Science Sets, Hand Held Electronic Games, Sporting Goods (Soccer/ Footballs). Cosmetics (Nail Polish, Hair Accessories, Makeup), Hoodies, Gift Cards



For In-Kind Donation Questions, please contact

Nichelle at **(780) 423-2285** ext. **159** or email **nbryant@bissellcentre.org**



Bissell Centre
bissellcentre.org

White Gift Sunday
Donation Drop-off Dates & Times
December 6th & 13th, 2015
11:00am-4:00pm